



Whatman Road, SE23 | £550,000

02087029444

foresthill@pedderproperty.com

pedder
We live local



In General

- Share of freehold
- Two double bedrooms
- Split-level
- Charming period features
- Loft space
- Bright and spacious reception room
- Modern eat-in kitchen
- Large bathroom suite
- Close to local amenities
- Excellent transport links

In Detail

A beautifully presented two double bedroom split-level period conversion, ideally positioned just 0.4 miles from Honor Oak Park station and offered with a share of the freehold.

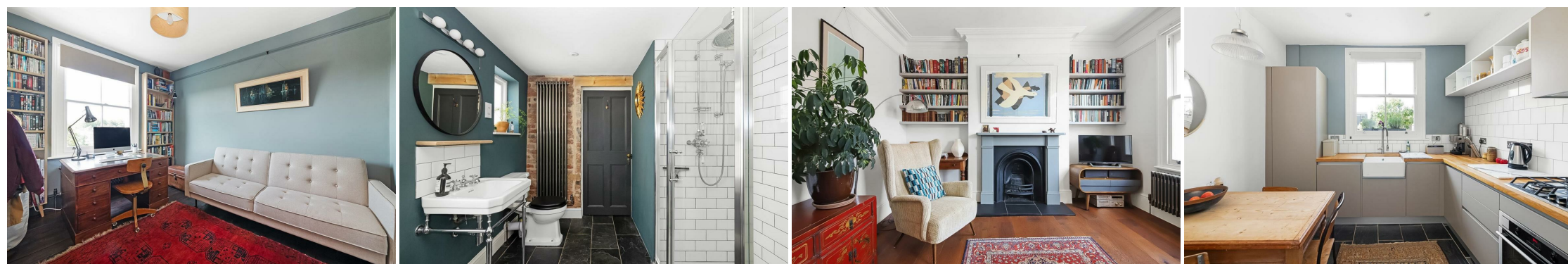
Thoughtfully renovated to an exceptional standard throughout, this impressive home is arranged over two floors and blends contemporary styling with attractive period character. The property comprises two generous double bedrooms with wooden flooring, a stylish bathroom suite featuring a freestanding bath and separate walk-in shower, a modern eat-in kitchen, and a bright, elegant reception room centred around a charming feature fireplace.

Further benefits include a modern gas combi boiler, access to a substantial loft space, excellent natural light throughout, and an array of original period features that enhance the home's character and appeal.

Conveniently located just 0.4 miles from Honor Oak Park Station, the property offers excellent connections to London Bridge, Victoria, Canada Water, Canary Wharf, Shoreditch, Whitechapel, Highbury & Islington, and beyond. A superb selection of independent cafés, restaurants, gastropubs, green spaces, and well-regarded schools can also be found nearby.

Early viewing is highly recommended. Please contact the Forest Hill sales team for further information or to arrange a viewing.

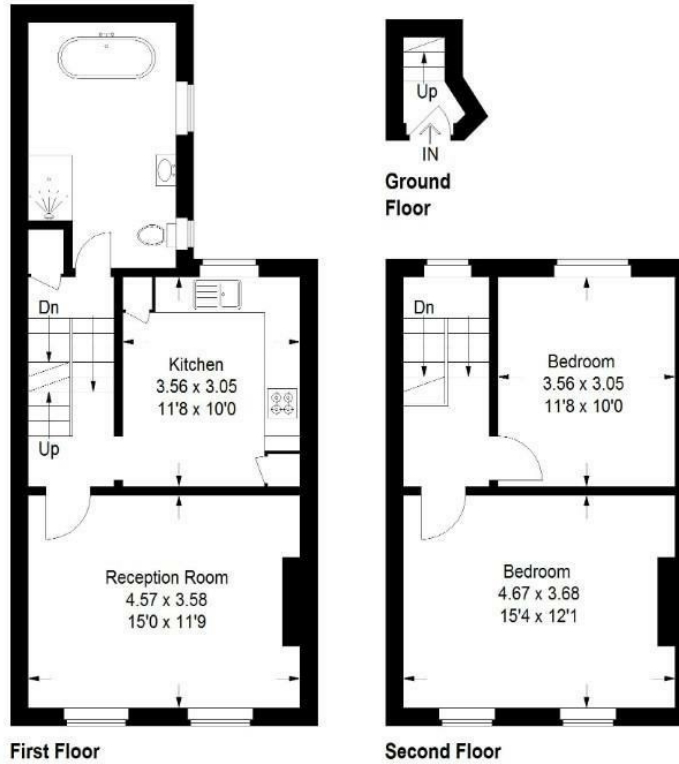
EPC: C | Council Tax Band: C | Share of freehold: 999 years remaining | SC: £0 | GR: £0 | BI: approx. £350 pa



Floorplan

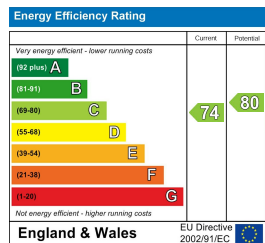
Whatman Road, SE23

Approximate Gross Internal Area
79.2 sq m / 853 sq ft



Copyright www.pedderproperty.com © 2026

These plans are for representation purposes only as defined by RICS - Code of Measuring Practice. Not drawn to Scale. Windows and door openings are approximate. Please check all dimensions, shapes and compass bearings before making any decisions reliant upon them.



Pedder Property Ltd trading as Pedder for themselves and for the vendor/landlord of this property whose agents they are, give notice that (1) these particulars do not constitute any part of an offer or contract, (2) all statements contained within these particulars are made without responsibility on the part of Pedder or the vendor/landlord, (3) whilst made in good faith, none of the statements contained within these particulars are to be relied upon as a statement of representation or fact, (4) any intending purchaser/tenant must satisfy him/herself by inspection or otherwise as to the correctness of each of the statements contained within these particulars, (5) the vendor/landlord does not make or give either Pedder or any person in their employment any authority to make or give representation or warranty whatsoever in relation to this property.